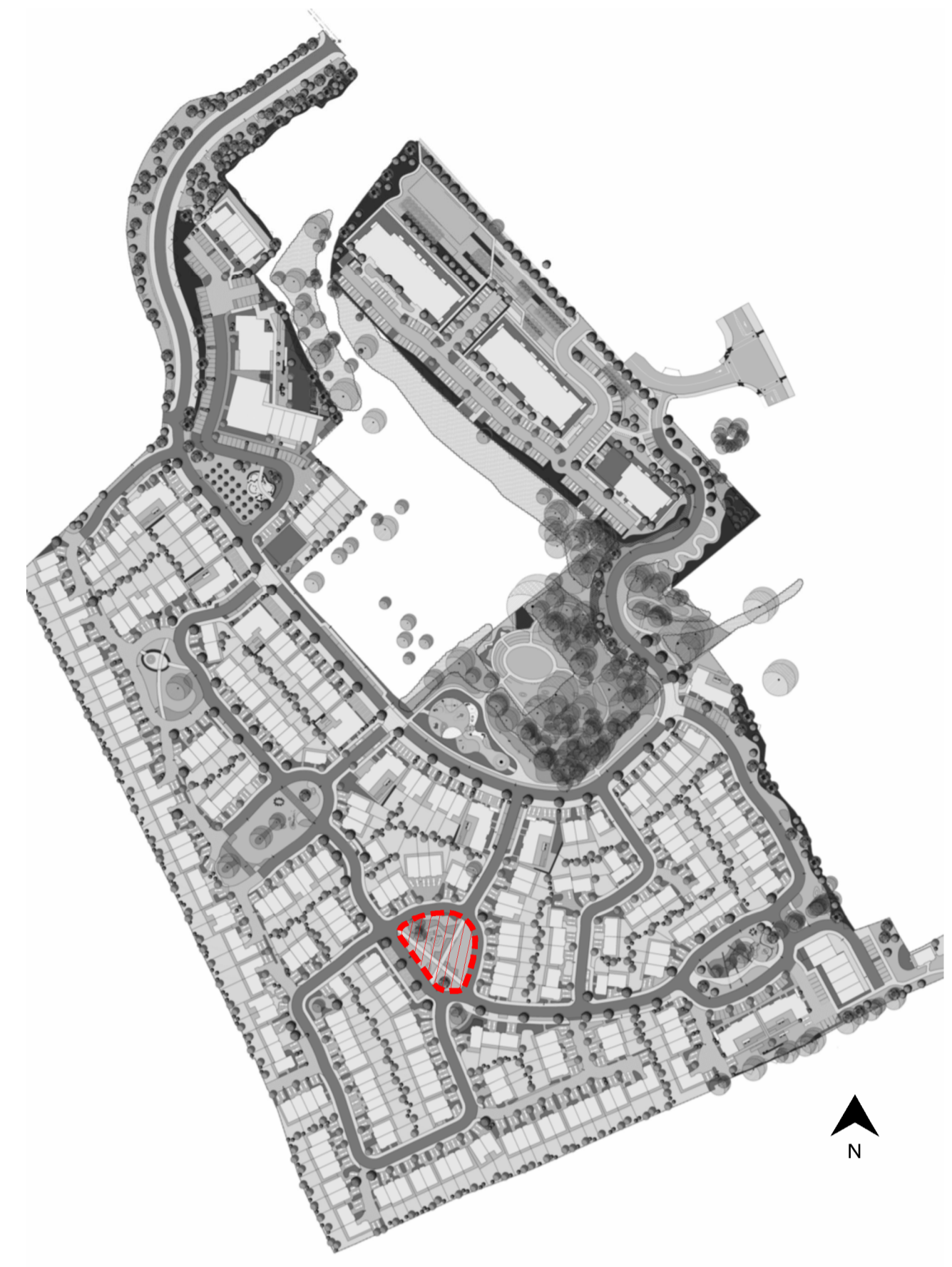




HIGH PARK, PLAN VIEW  
SC. 1:200

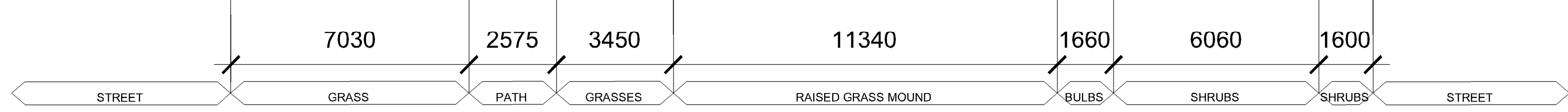
- LEGEND:**  
NOTE: for details of materials & planting see drawing 18221-2-103
- GENERAL**
- Existing Trees/Group of Trees
  - Proposed Building
- PROPOSED PLANTING AND HABITATS**
- Parkland Trees
  - Street Trees
  - Small to Medium Garden Trees
  - Orchard Trees
  - Birch Thickets
  - Amenity / Private Grass
  - Low / Medium height shrub Planting
  - Hedge
  - Mixed Native Woodland Planting
  - Ornamental Grasses + Planting
  - Bulb Planting / Long grass
  - Landform
  - Swale
- PROPOSED HARD ELEMENTS**
- Tarmac Road
  - Concrete Footpath
  - Raised Table
- Tactile Paving**
- Rolled Dust/Gravel Path**
- PCC Pavers for Vehicular/Pedestrian**
- Shared surface-Coloured tarmac**
- Cycle way**
- Parking Bay and Treshold Paving**
- PCC setts**
- Attenuation area**
- 1.2m high vertical bar railing**
- PROPOSED PLAY AREAS**
- Rubber / Woodchip Play surface
  - Sand area in Playground
  - Boardwalk Play Features
  - Balance Beams
  - Informal Play: Boulders, Mounds, Logs
  - Play Equipment
  - Fitness Trail Equipment
- PROPOSED FURNITURE & STRUCTURES**
- Coursed gabion retaining walls
  - 1. Bike Stands
  - 2. Bin Shed
  - 3. Bins
  - Indicative location of substation unit
  - Street Lighting
  - Pumping station



KEY PLAN NTS



HIGH PARK SECTION  
SC. 1:100



**High Park**  
Simple rolled dust paths follow desire lines. Occasional benches are provided around an irregularly shaped mound with a slide built into it. The pocket park is enclosed with seasonal bulbs and ornamental grasses / shrub planting surrounding both existing and proposed trees.



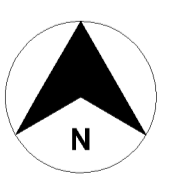
THE ASHES, INDICATIVE IMAGES

**NOTE:**  
- DRAWING ISSUED FOR PLANNING PURPOSE ONLY.  
LANDSCAPE IS SUBJECT TO APPROVAL OF THE PLANNING AUTHORITY

REV	DATE	AMENDMENT
A	14/11/2019	PLANNING ISSUE

**CUNNANE STRATTON REYNOLDS**  
**LAND PLANNING & DESIGN**

DUBLIN OFFICE  
3 MOLESWORTH PLACE DUBLIN 2  
TEL 01 661 0419 FAX 01 661 0431  
EMAIL info@csrlandplan.ie



PROJECT: BELMOUNT RESIDENTIAL DEVELOPMENT ACADEMY STREET, NAVAN, CO MEATH	DATE: October 2019
DRAWING: LANDSCAPE MASTERPLAN DETAIL: HIGH PARK	SCALE: VARIOUS @ A1
	DRAWN: DC
	CHECKED: EO
	DRAWING NO: 18221-2-404